

# PPB Force Analysis Summary Report



Prepared By: Office of the Inspector General

Dates Covered: October 1, 2021 - December 31, 2021

## Force Facts:

Number of cases involving force	158
Number of individuals involved in force incidents	161
Number of officers involved in force incidents	215
Total Force Data Collection Reports (FDCRs) written	344

## Subjects of Uses of Force

161

Asian	Female	1	1%	Hispanic	Male	17	11%
	Male	1	1%	Native American	Male	2	1%
Black	Female	8	5%	Unknown	Male	2	1%
	Male	28	17%		Unknown	4	2%
Hispanic	Female	1	1%	White	Female	18	11%
					Male	79	49%

## Applications of Force

674

Aerosol Restraint	77	11%	Hobble	2	0%
Baton - Nonstrike	0	0%	K-9 Bite	1	0%
Baton - Strike	0	0%	Less Lethal	5	1%
Box-In	56	8%	Less Lethal - Aggressive Animal	0	0%
CEW	27	4%	P.I.T.	14	2%
Control Against Resistance	167	25%	Pointing of a Firearm	21	3%
Firearm - Animal (aggressive)	0	0%	RAM	0	0%
Firearm - Animal (suffering)	2	0%	Resisted Handcuffing	164	24%
Holds with Injury	0	0%	Strikes/Kicks	52	8%
			Takedown	74	11%
			Takedown - Controlled	12	2%

Beginning August 19, 2017, PPB began reporting the following 10 force types: *Baton - nonstrike, Takedown - controlled, Resisted Handcuffing, Hobble Restraint, Firearm - Animal (suffering), Firearm - Animal (Aggressive), Box-in, Control Against Resistance, P.I.T., and Vehicle Ramming*. On January 19, 2020, *Less Lethal to stop an aggressive animal* was added. These force types are listed in red font in the above tables. Figures detailed in this report are not comparable to reports published prior to August 19, 2017.

## Force Type Demographics

	Asian		Black		Hispanic		Native American	Unknown		White	
	Female	Male	Female	Male	Female	Male	Male	Male	Unknown	Female	Male
Aerosol Restraint	0	0	0	1	0	0	1	0	0	0	2
Baton - Nonstrike	0	0	0	0	0	0	0	0	0	0	0
Baton - Strike	0	0	0	0	0	0	0	0	0	0	0
Box-In	0	0	0	5	0	1	0	1	1	2	20
CEW	0	0	1	4	0	2	1	1	0	1	7
Control Against Resistance	0	0	5	9	1	8	1	1	0	6	24
Hobble Restraint	0	0	1	0	0	0	0	0	0	0	1
Holds with Injury	0	0	0	0	0	0	0	0	0	0	0
K-9 Bite	0	0	0	0	0	0	0	0	0	0	1
Less Lethal	0	0	0	2	0	0	0	0	0	0	1
P.I.T.	0	0	0	0	0	2	0	0	1	1	8
Pointing of a Firearm	0	0	2	4	0	1	0	0	0	0	7
RAM	0	0	0	0	0	0	0	0	0	0	0
Resisted Handcuffing	1	1	4	9	1	12	2	1	0	9	32
Strikes/Kicks	0	0	1	0	0	3	1	1	0	0	9
Takedown - Controlled	0	0	0	3	0	2	0	0	0	0	2
Takedown	0	1	3	3	0	6	2	1	0	4	26
Total	1	2	17	40	2	37	8	6	2	23	140

Note: This is the type of force used per subject demographic. This is not the number of applications of force used per demographic. This data does not include crowd control or deadly force events. Refer to later pages for crowd control and deadly force information.

# PPB Force Analysis Summary Report



Prepared By: Office of the Inspector General

Dates Covered: October 1, 2021 - December 31, 2021

## Custody Facts:

Subjects of Force to Custody Ratio: 5.37%

Subjects of Force without Custody: 14

Total PPB Custodies\* 2,999

Asian	Female	15	1%	Native American	Male	31	1%
	Male	80	3%	Unknown	Female	4	0%
Black	Female	152	5%		Male	19	1%
	Male	522	17%		Unknown	11	0%
Hispanic	Female	38	1%	White	Female	442	15%
	Male	249	8%		Male	1,421	47%
Native American	Female	14	0%		Unknown	1	0%

\*Due to policy changes related to Arrest Bookings and General Offenses, the formula used to calculate custodies has changed slightly since Q2 2017.

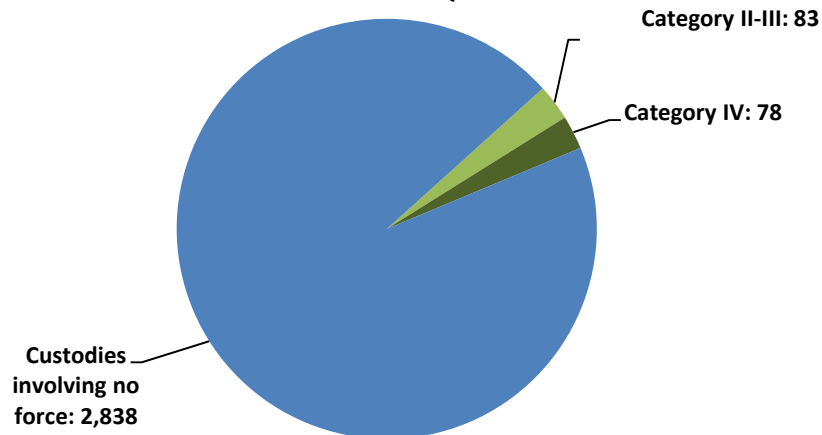
## Force Data Collection Report Summary:

	This year compared to last year			This quarter compared to last quarter		
	Q4 2021	Q4 2020	Change +/-	Q4 2021	Q3 2021	Change +/-
FDCRs Completed	344	378	-9%	344	429	-20%
Total Cases w/Force*	158	168	-6%	158	190	-17%
Total Calls for Service	73,451	68,911	7%	73,451	75,760	-3%

\*Refers to the count of case numbers where force was used.

## Portland Police Bureau

### Subjects of Category II-III Force and Category IV Force to Custodies Ratio Q4 2021



Category II-III force was used against 83 people, and Category IV force was used against 78 people while 2,999 people were taken into custody. Category II-III accounts for about 2.77% of custodies, and Category IV accounts for about 2.60% of custodies.

- Category II-III Force**
  - Hold with Injury
  - Takedown
  - Strikes/Kicks
  - Impact Weapon - Strike
  - Less Lethal
  - Aerosol Restraint
  - CEW
  - K-9 Bite
  - PIT
  - Vehicle Ramming
- Category IV Force**
  - Baton - Nonstrike
  - Takedown - Controlled
  - Resisted Handcuffing
  - Pointing of a Firearm
  - Hobble Restraint
  - Firearm - End Suffering Animal
  - Box-In
  - Control Against Resistance
  - Less Lethal - Aggressive Animal

Note: This data does not include crowd control or deadly force events.

# PPB Force Analysis Summary Report



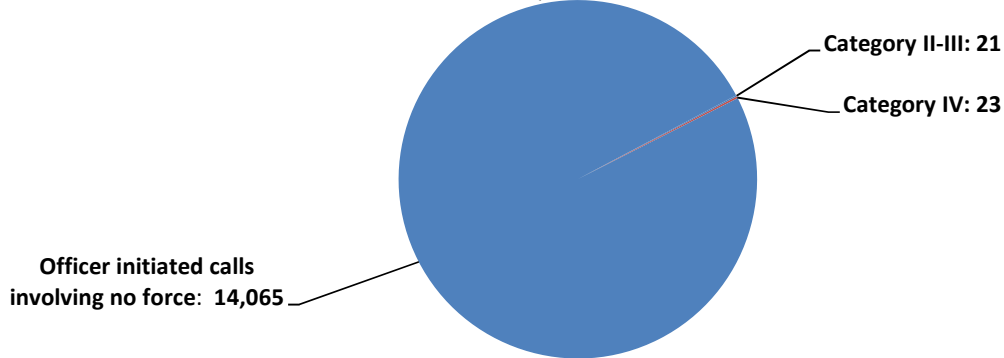
Prepared By: Office of the Inspector General

Dates Covered: October 1, 2021 - December 31, 2021

## Calls for Service Facts:

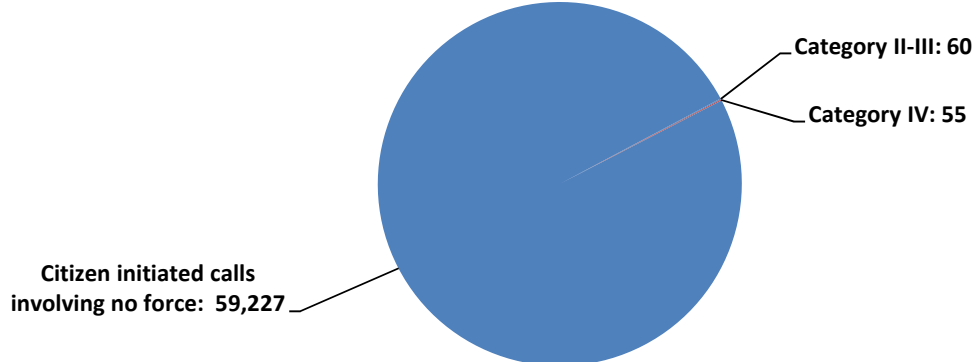
Dispatched	59,342	81%
Self-Initiated / Directed	14,109	19%
<b>Total</b>	<b>73,451</b>	<b>100%</b>

### Portland Police Bureau Officer Initiated Calls resulting in Category II-III Force or Category IV Force Q4 2021



Officers initiated 14,109 calls for service during this period. Of these officer-initiated calls, 21 resulted in a use of Category II-III force (0.15%) and 23 resulted in a use of Category IV force (0.16%).

### Portland Police Bureau Citizen Initiated Calls resulting in Category II-III Force or Category IV Force Q4 2021



Citizens initiated 59,342 calls for service during this period. Of these citizen-initiated calls, 60 resulted in Category II-III force (0.10%) and 55 resulted in Category IV force (0.09%).

*Note: This data does not include crowd control or deadly force events.*

# PPB Force Analysis Summary Report

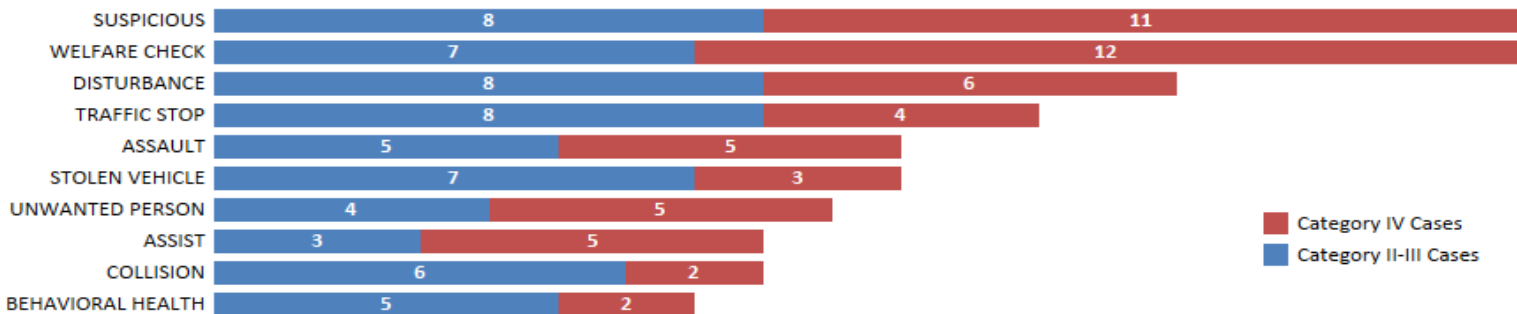


Prepared By: Office of the Inspector General

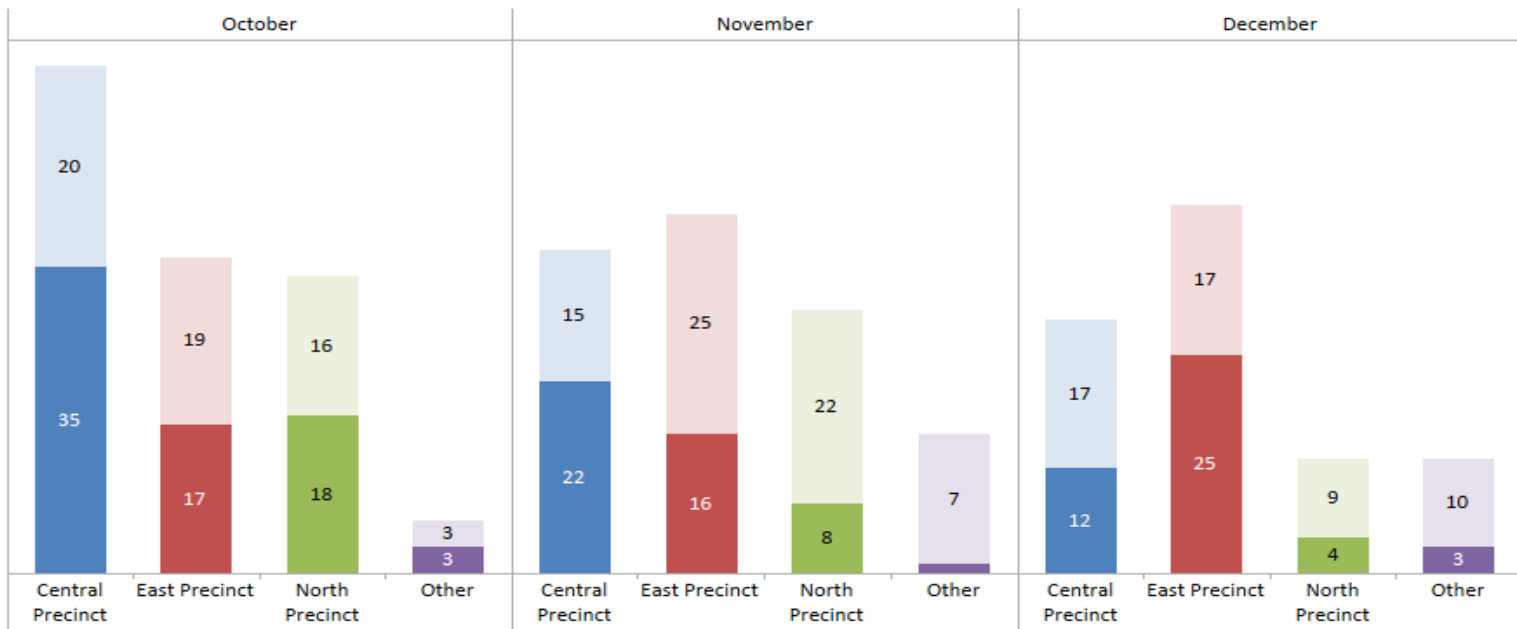
Dates Covered: October 1, 2021 - December 31, 2021

## Summary Charts:

**Portland Police Bureau  
Top 10 Initial Call Types Resulting in Force  
2021-Q4**



**Portland Police Bureau  
FDCRs Written and Officer Precinct  
2021-Q4**  
Dark Bars - Category II - III FDCRs  
Light Bars - Category IV FDCRs



Note: This data does not include crowd control or deadly force events.

# PPB Force Analysis - Central Precinct



Prepared By: Office of the Inspector General

Dates Covered: October 1, 2021 - December 31, 2021

## Force Facts - Central Precinct:

Number of cases involving force	57
Number of officers involved in force incidents	75
Number of persons armed	19
Number of persons in a mental health crisis	15

## Subjects of Uses of Force

59

Black	Female	3	5%	Unknown	Unknown	2	3%
	Male	13	22%	White	Female	8	14%
Hispanic	Male	8	14%		Male	25	42%

## Applications of Force

221

Aerosol Restraint	0	0%	Hobble	1	0%
Baton - Nonstrike	0	0%	K-9 Bite	0	0%
Baton - Strike	0	0%	Less Lethal	0	0%
Box-In	5	2%	Less Lethal - Aggressive Animal	0	0%
CEW	5	2%	P.I.T.	2	1%
Control Against Resistance	79	36%	Pointing of a Firearm	8	4%
Firearm - Animal (aggressive)	0	0%	RAM	0	0%
Firearm - Animal (suffering)	2	1%	Resisted Handcuffing	69	31%
Holds with Injury	0	0%	Strikes/Kicks	22	10%
			Takedown	25	11%
			Takedown - Controlled	3	1%

Beginning August 19, 2017, PPB began reporting the following 10 force types: *Baton - nonstrike*, *Takedown - controlled*, *Resisted Handcuffing*, *Hobble Restraint*, *Firearm - Animal (suffering)*, *Firearm - Animal (Aggressive)*, *Box-in*, *Control Against Resistance*, *P.I.T.*, and *Vehicle Ramming*. On January 19, 2020, *Less Lethal to stop an aggressive animal* was added. These force types are listed in red font in the above tables. Figures detailed in this report are not comparable to reports published prior to August 19, 2017.

## FDCRs Written by Precinct, Day, and Time:

Central Precinct 2021-Q4

	Sunday	Monday	Tuesday	Wednesd..	Thursday	Friday	Saturday	Total
0000-0559	7	10	2	4	1	4	0	28
0600-1159	8	3	8	3	5	6	2	35
1200-1759	2	10	5	3	1	5	5	31
1800-2359	5	3	5	2	9	3	0	27
Total	22	26	20	12	16	18	7	121

Note: This data does not include crowd control or deadly force events.

Beginning August 19, 2017, PPB began reporting the following 10 force types: *Baton - nonstrike*, *Takedown - controlled*, *Resisted Handcuffing*, *Hobble Restraint*, *Firearm - Animal (suffering)*, *Firearm - Animal (Aggressive)*, *Box-in*, *Control Against Resistance*, *P.I.T.*, and *Vehicle Ramming*. On January 19, 2020, *Less Lethal to stop an aggressive animal* was added. These force types are listed in red font in the above tables. Figures detailed in this report are not comparable to reports published prior to August 19, 2017.

# PPB Force Analysis - East Precinct



Prepared By: Office of the Inspector General

Dates Covered: October 1, 2021 - December 31, 2021

## Force Facts - East Precinct:

Number of cases involving force	63
Number of officers involved in force incidents	62
Number of persons armed	28
Number of persons in a mental health crisis	2

## Subjects of Uses of Force

64

Black	Female	4	6%	Hispanic	Male	6	9%
	Male	10	16%	White	Female	8	13%
					Male	36	56%

## Applications of Force

190

Aerosol Restraint	0	0%	Hobble	1	1%
Baton - Nonstrike	0	0%	K-9 Bite	0	0%
Baton - Strike	0	0%	Less Lethal	5	3%
Box-In	26	14%	Less Lethal - Aggressive Animal	0	0%
CEW	3	2%	P.I.T.	7	4%
Control Against Resistance	46	24%	Pointing of a Firearm	5	3%
Firearm - Animal (aggressive)	0	0%	RAM	0	0%
Firearm - Animal (suffering)	0	0%	Resisted Handcuffing	54	28%
Holds with Injury	0	0%	Strikes/Kicks	13	7%
			Takedown	26	14%
			Takedown - Controlled	4	2%

Beginning August 19, 2017, PPB began reporting the following 10 force types: *Baton - nonstrike*, *Takedown - controlled*, *Resisted Handcuffing*, *Hobble Restraint*, *Firearm - Animal (suffering)*, *Firearm - Animal (Aggressive)*, *Box-in*, *Control Against Resistance*, *P.I.T.*, and *Vehicle Ramming*. On January 19, 2020, *Less Lethal to stop an aggressive animal* was added. These force types are listed in red font in the above tables. Figures detailed in this report are not comparable to reports published prior to August 19, 2017.

## FDCRs Written by Precinct, Day, and Time:

East Precinct 2021-Q4

	Sunday	Monday	Tuesday	Wednesd..	Thursday	Friday	Saturday	Total
0000-0559	5	0	2	2	3	2	5	19
0600-1159	3	6	4	0	5	4	0	22
1200-1759	3	4	7	0	3	2	6	25
1800-2359	6	10	5	10	6	11	5	53
Total	17	20	18	12	17	19	16	119

Note: This data does not include crowd control or deadly force events.

Beginning August 19, 2017, PPB began reporting the following 10 force types: *Baton - nonstrike*, *Takedown - controlled*, *Resisted Handcuffing*, *Hobble Restraint*, *Firearm - Animal (suffering)*, *Firearm - Animal (Aggressive)*, *Box-in*, *Control Against Resistance*, *P.I.T.*, and *Vehicle Ramming*. On January 19, 2020, *Less Lethal to stop an aggressive animal* was added. These force types are listed in red font in the above tables. Figures detailed in this report are not comparable to reports published prior to August 19, 2017.

# PPB Force Analysis - North Precinct



Prepared By: Office of the Inspector General  
 Dates Covered: October 1, 2021 - December 31, 2021

## Force Facts - North Precinct:

Number of cases involving force	38
Number of officers involved in force incidents	60
Number of persons armed	13
Number of persons in a mental health crisis	10

## Subjects of Uses of Force

38

Asian	Female	1	3%	Hispanic	Male	4	11%
	Male	1	3%	Native American	Male	2	5%
Black	Female	1	3%	Unknown	Male	2	5%
	Male	3	8%		Unknown	1	3%
Hispanic	Female	1	3%	White	Female	2	5%
					Male	20	53%

## Applications of Force

160

Aerosol Restraint	3	2%	Hobble	0	0%
Baton - Nonstrike	0	0%	K-9 Bite	0	0%
Baton - Strike	0	0%	Less Lethal	0	0%
Box-In	19	12%	Less Lethal - Aggressive Animal	0	0%
CEW	17	11%	P.I.T.	2	1%
Control Against Resistance	38	24%	Pointing of a Firearm	3	2%
Firearm - Animal (aggressive)	0	0%	RAM	0	0%
Firearm - Animal (suffering)	0	0%	Resisted Handcuffing	36	23%
Holds with Injury	0	0%	Strikes/Kicks	17	11%
			Takedown	23	14%
			Takedown - Controlled	2	1%

Beginning August 19, 2017, PPB began reporting the following 10 force types: *Baton - nonstrike*, *Takedown - controlled*, *Resisted Handcuffing*, *Hobble Restraint*, *Firearm - Animal (suffering)*, *Firearm - Animal (Aggressive)*, *Box-in*, *Control Against Resistance*, *P.I.T.*, and *Vehicle Ramming*. On January 19, 2020, *Less Lethal to stop an aggressive animal* was added. These force types are listed in red font in the above tables. Figures detailed in this report are not comparable to reports published prior to August 19, 2017.

## FDCRs Written by Precinct, Day, and Time:

North Precinct 2021-Q4

	Sunday	Monday	Tuesday	Wednesd..	Thursday	Friday	Saturday	Total
0000-0559	4	4	2	5	3	2	5	25
0600-1159	2	1	0	0	0	5	0	8
1200-1759	3	5	1	0	7	1	5	22
1800-2359	4	4	0	4	6	2	2	22
Total	13	14	3	9	16	10	12	77

Note: This data does not include crowd control or deadly force events.

Beginning August 19, 2017, PPB began reporting the following 10 force types: *Baton - nonstrike*, *Takedown - controlled*, *Resisted Handcuffing*, *Hobble Restraint*, *Firearm - Animal (suffering)*, *Firearm - Animal (Aggressive)*, *Box-in*, *Control Against Resistance*, *P.I.T.*, and *Vehicle Ramming*. On January 19, 2020, *Less Lethal to stop an aggressive animal* was added. These force types are listed in red font in the above tables. Figures detailed in this report are not comparable to reports published prior to August 19, 2017.

# PPB Force Analysis - Out of Policy Cases



Prepared By: Office of the Inspector General

Dates Covered: October 1, 2021 - December 31, 2021

## Out of Policy Cases in Q4 2021

Case	Force Type(s)	Type of Arrest	Type of Event	Number of Officers Who Used Force	Number of Out of Policy Officers	Number of Involved Subjects
0	There were no uses of force that were found to be Out of Policy in Q4 2021.					



# PPB Force Analysis Summary Report - Deadly Use of Force and Crowd Control



Prepared By: Office of the Inspector General  
 Dates Covered: October 1, 2021 - December 31, 2021

Deadly Use of Force:

Deadly Use of Force - Q4 2021		
Date	Subject Demographics	Fatal/Non-Fatal
12/6/2021	White Male	Fatal
12/11/2021	White Male	Non-Fatal

Crowd Control Force Facts:

Event Name	Date	Force Application Count Type	Aerosol Restraint	Baton - Nonstrike	Baton - Strike	Box-In	Chemical Agent - CS	Chemical Agent - OC	Control Against Resistance	Hobble	Launchable Impact - 40mm Sponge	Launchable Impact - FN303	Launchable Impact - Marking	Launchable Impact - RBDD	P.I.T.	BAM	Resisted Handcuffing	Sound Light Dist. Device	Strikes/Kicks	Takedown	Takedown - Controlled	Minimum # of Applications*
------------	------	------------------------------	-------------------	-------------------	----------------	--------	---------------------	---------------------	----------------------------	--------	---------------------------------	---------------------------	-----------------------------	--------------------------	--------	-----	----------------------	--------------------------	---------------	----------	-----------------------	----------------------------

No force was used at crowd control events during Q4 2021

**\* Number of FDCRs by Count Type: Estimated vs. Actual**

When an officer identified an exact number of applications for each force type, the count type was considered an actual count. When an officer did not identify a concrete number of applications for each force type used on their FDCR, the following methodology was applied:

- If an officer provided a numerical estimate (for example, "I pushed a person 3-5 times with my baton"), then this force type was counted using the highest number of the estimate (5 in this example) and considered an actual count.

- If no clear estimate was given (for example, "I pushed multiple persons at multiple locations with my baton throughout the night"), then this force type was counted as one application and considered an estimated count.

The Force Application Count Type is counted per FDCR, not force type.

For the description of the force types listed above, please see the Definitions section of this report and Directive 1010.00. In addition, the following methodology was used for crowd control specific force types:

FN303 Pava/OC Powder 40mm rounds used as an area denial tool were counted as Chemical Agent – OC; Inert RBDD's were counted as Control Against Resistance; Baton/hand used to push an individual who resisted the officer's efforts was counted as Control Against Resistance; Baton/hand used to push an individual that resulted in the individual falling to the ground was counted as Takedown; Each canister was counted for Chemical Agent-CS/Chemical Agent-OC applications.

The following were not considered an application of force: inert smoke canister, smoke SKAT round, baton/hand used to guide an individual who demonstrated no resistance to the officer's efforts.